

Urząd Marszałkowski
Województwa Lubelskiego
w Lublinie



Open innovation and UDI as innovation policy instruments – regional approach

Dorota Skwarek
Deputy Director
Department for Regional Policy
Lubelskie Voivodeship



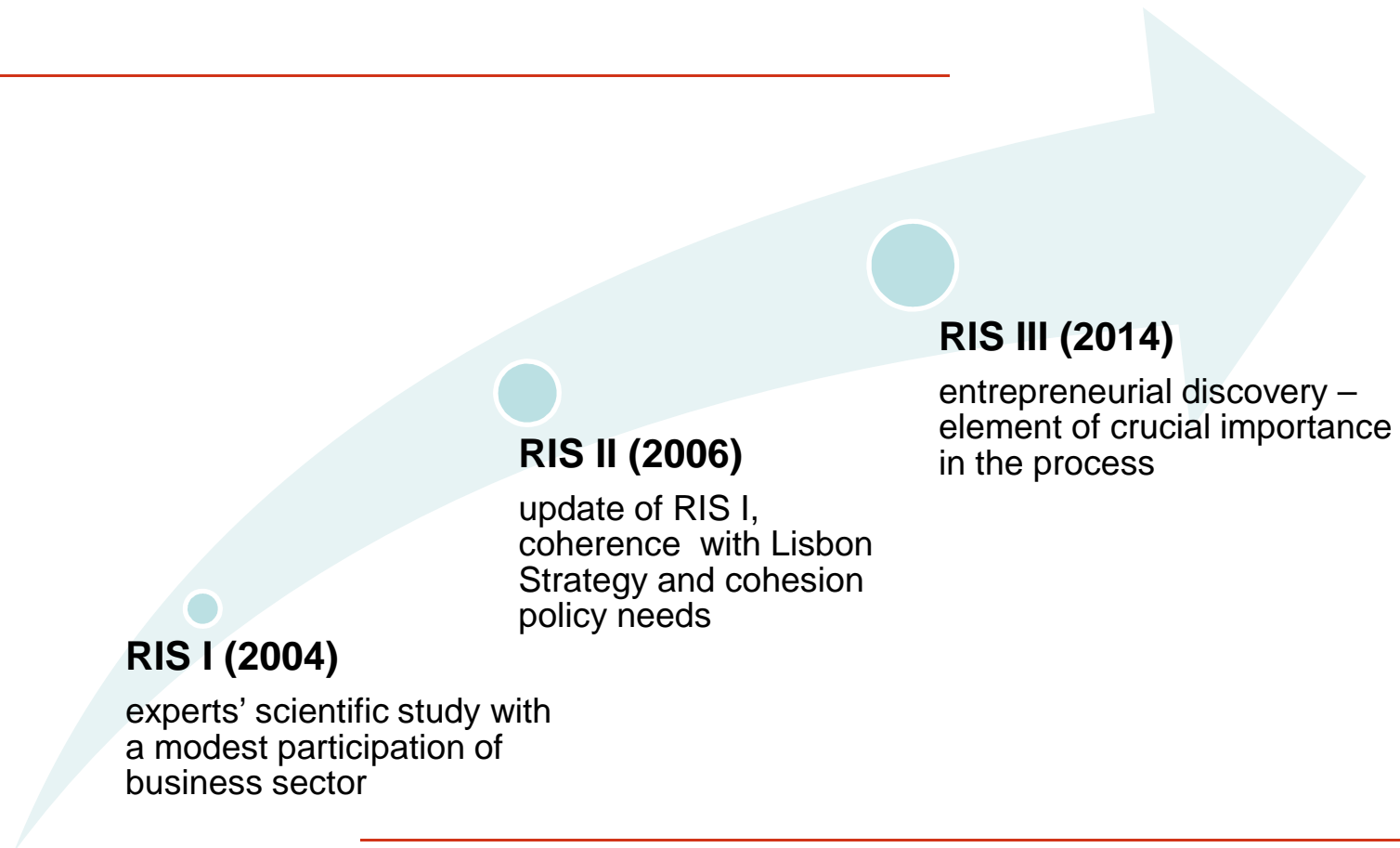
Bilbao, 20 November 2014

Profile of the region

- **Location:** central Europe, eastern part of Poland, eastern border of EU
- **GDP:** 51 billion PLN (around 12 bilion EUR)
- **An agricultural region:** 1386 licensed ecological farms (the third position in Poland), important producer of herbs
- **Well-known in Poland educational center,** i.a. 5 universities and 3 institutes of Polish Academy of Science



Evolution of innovation policy in Lubelskie Voivodeship



National and regional approach to open innovation and UDI

Central level:

- ❑ Strategy of Innovation and Economy Effectiveness for 2012-2020 *Dynamic Poland*
- 2.4.6. *Popularisation of the open innovation model* : popularisation of OI respecting intellectual property rights; raise of awareness among „innovative creators”

Regional level: TR3S Innovation Breakfast Events – 2013

- 2 meetings
- 40 entities – „discovery” process
- main questions raised
 - How does it work in UE and worldwide?
 - Do we practise open innovations and UDI in Lubelskie?
 - What can disturb and what can help to use these concepts in Lubelskie?



TR3S in Lubelskie RIS

New Factory → consortium of business support institutions

- ✓ innovative start ups
- ✓ Demola

INTERFACE → Lublin Science and Technology Park

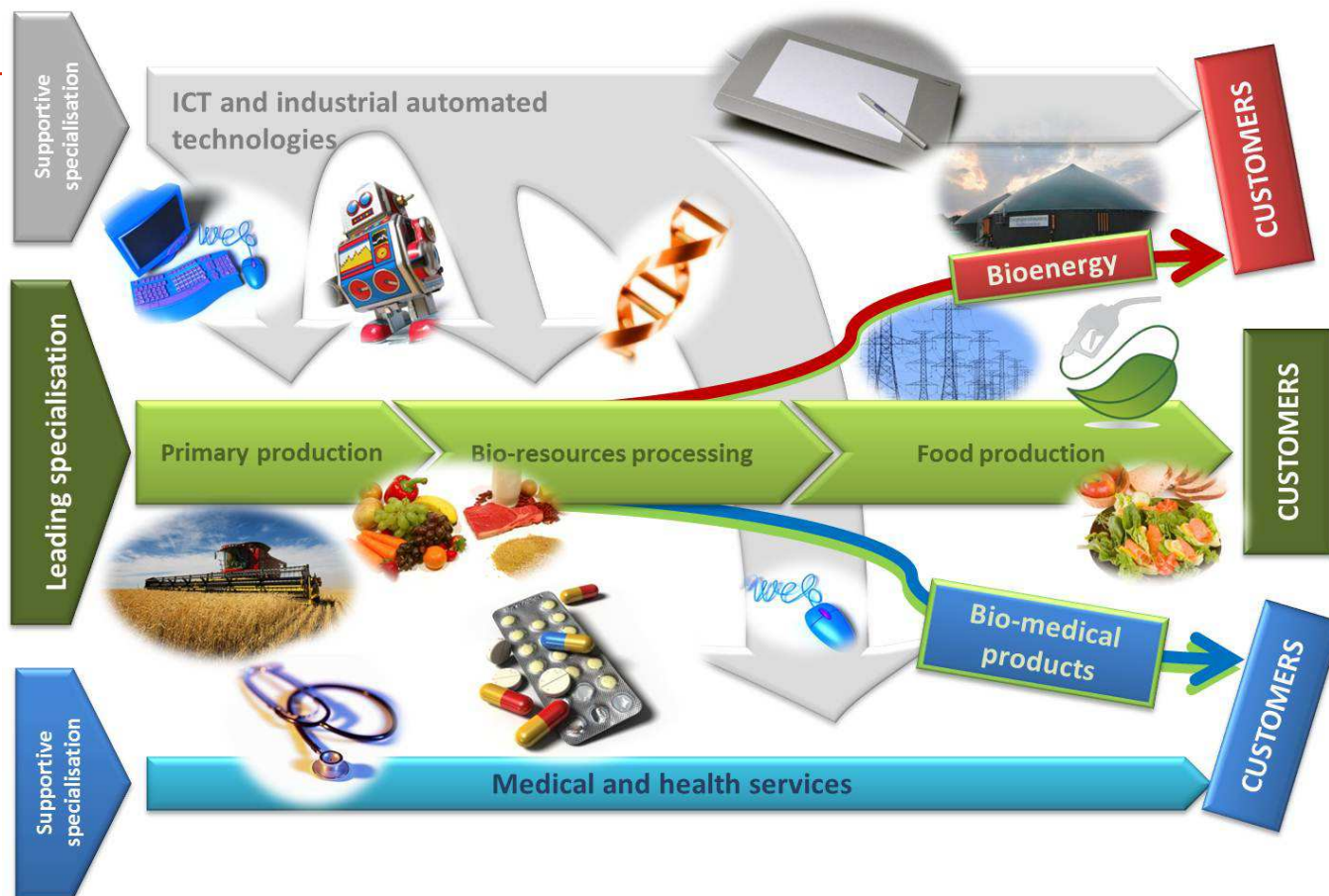
- ✓ innobroker net

Action Plan for LRIS

ROP for Lubelskie



Smart specialisation areas



Lubelskie in Interreg projects

Influence of the international and transnational cooperation projects on the innovation policy development in the region

- Effective use of other regions' experiences and implementation of good practices into our innovation policy
- Active participation in network initiatives and network cooperation support in the region
- Promoting international and transnational cooperation as an element of support for regional innovation policy implementation
- Creation of culture favouring innovation



Contact details

Dorota Skwarek

Deputy Director

Department for Regional Policy

- E-mail: dorota.skwarek@lubelskie.pl

- Unit of European Territorial Co-operation in the Department for Regional Policy

Ewa Paszkiewicz-Tomasiak

E-mail: ewa.paszkiewicz@lubelskie.pl

Tel. +48 81 44 16 869

Fax. +48 81 44 16 544

www.lubelskie.pl

